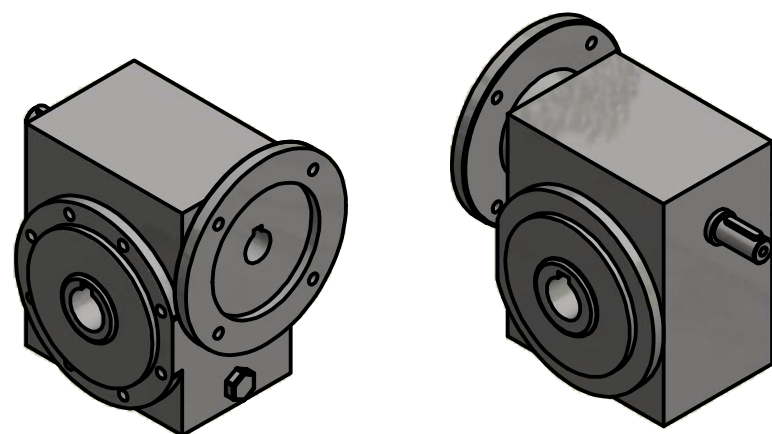
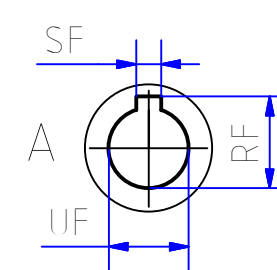
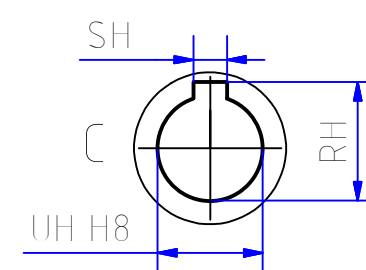




RVS wormwielkasten			
Type	040	050	063
A	40	50	63
AC	50	60	72
AJ	85	105	132
AK	76	93	118
AQ	99	117	144
B	68	81	101
BA	45°	22.5°	22.5°
BR	96	120	148
BU	M6x10	M8x14	M8x14
aantal	4	8	8
DY	71.5	84	102
E	75	80	120
EA	70	79	96
F	45	65	80
H	M6x12	M8x10	M8x12
O	121.5	144	174
P	1	2.5	4
Q	3	3	2
RH	20.8	28.3	28.3
SH	6	8	8
SLW	15.6	16	16
ST	7	6	7
UH H8	18	25	25
WG	41	48	59
Y	90	105	118



IEC motorflens										
Flens	Type	P	N	M	S	T	L	UF	RF	SF
056B14a	025/030/040	80	50	65	5.5	4	20	9	10.4	3
056B5	030/040	120	80	100	6.6	4	20	9	10.4	3
063B14a	030/040/050	90	60	75	5.5	4	23	11	12.8	4
063B5	030/040/050	140	95	115	9	4	23	11	12.8	4
071B14a	040/050/063	105	70	85	6.6	4	30	14	16.3	5
071B5	040/050/063	160	110	130	9	4	30	14	16.3	5
080B14a	050/063/075/090	120	80	100	6.6	6	40	19	21.8	6
080B5	050/063/075/090	200	130	165	11	6	40	19	21.8	6
090B14a	063/075/090/110	140	95	115	9	6	50	24	27.3	8
090B5	063/075/090/110	200	130	165	11	6	50	24	27.3	8



			Stainless Steel		COPYRIGHT EURONORM, THIS DOCUMENT CONTAINS CONFIDENTIAL AND PROPRIETARY INFORMATION WHICH, UNLESS OTHERWISE EXPRESSLY AGREED TO IN WRITING BY EURONORM, REMAINS THE SOLE PROPERTY OF EURONORM, AND MAY NOT BE DISCLOSED, COPIED, REDISTRIBUTED, RETRANSMITTED, PUBLISHED OR USED TO CREATE DERIVATIVE WORKS. 2013 EURONORM.
Pos.	Amount	Drawing nr.:	Material	Measurements	
			Units: mm	Drawn by: Ruben Lie-A-Jen	
			Scale: -	Sheet: 1/1	
			Date: 16-03-2017	Revision: 4.0	
Projection: 	Format: A3		Title: JSSTD(B) – IEC motorflens (optioneel met doorlopende wormas)		