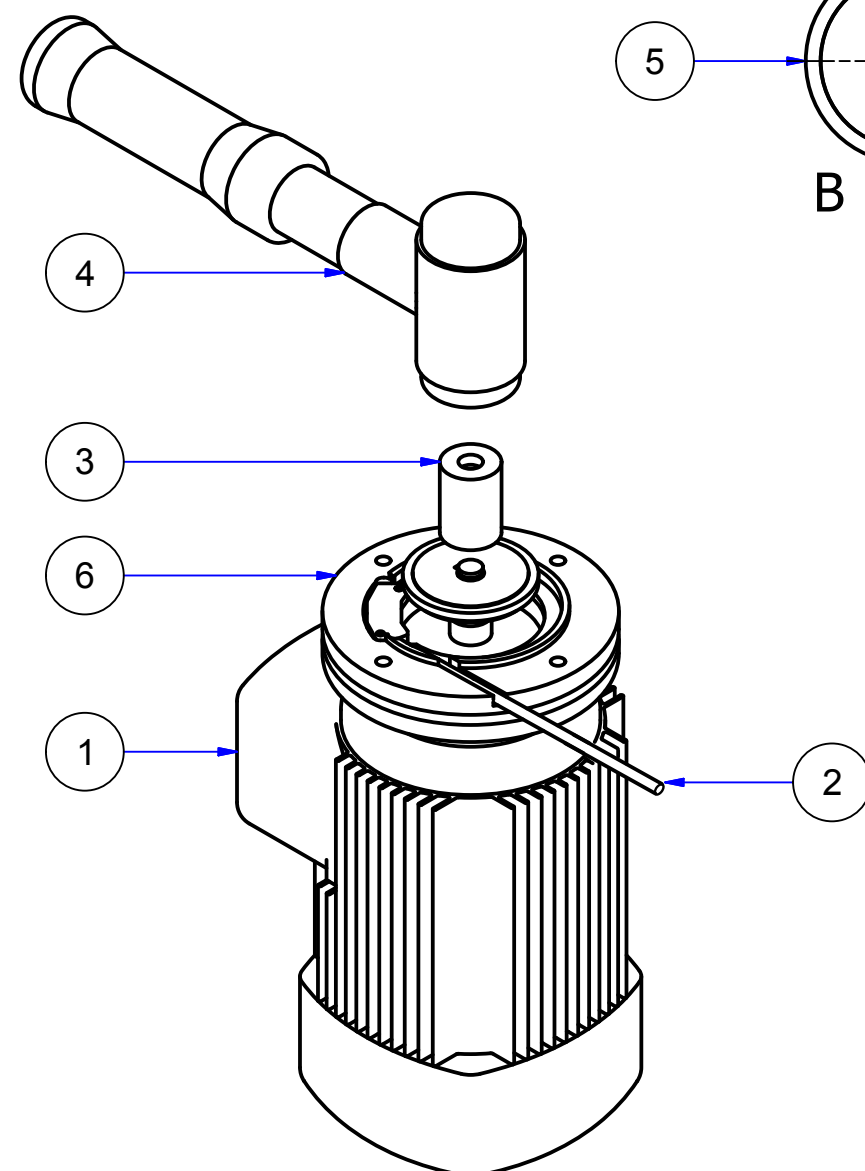
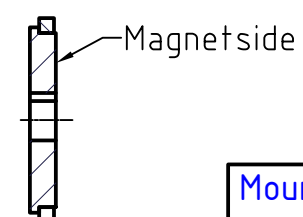
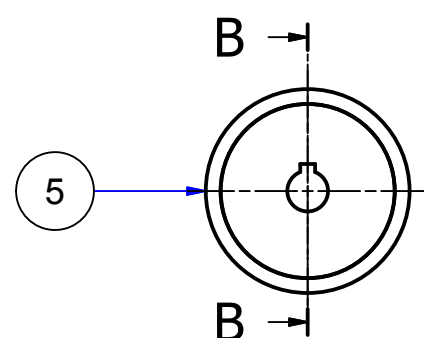




B-B (1:2)



Mount the "Magnetring" with the "Magnetside" towards the shaft end. Use a "Hollow pipe" and a "Plastic mallet" to position the "Magnetring".
Mount the "Flange encoder, Type RSB" with the raised fitting edge towards the shaft end of the "Drive system".
Caution: Make sure not to hit the magnet! Make sure that there is enough difference between the outside diameter of the "Hollow pipe" and the inside diameter of the magnet.

Parts List

ITEM	QTY	PART NUMBER	DESCRIPTION
1	1	Drive System	
2	1	Encoder chip	
3	1	Hollow pipe	
4	1	Plastic mallet	
5	1	Magnetring	
6	1	Flange encoder, Type RSB	

1	1		-	-	COPYRIGHT EURONORM, THIS DOCUMENT CONTAINS CONFIDENTIAL AND PROPRIETARY INFORMATION WHICH, UNLESS OTHERWISE EXPRESSLY AGREED TO IN WRITING BY EURONORM, REMAINS THE SOLE PROPERTY OF EURONORM, AND MAY NOT BE DISCLOSED, COPIED, REDISTRIBUTED, RETRANSMITTED, PUBLISHED OR USED TO CREATE DERIVATIVE WORKS. 2013 EURONORM.
Pos.	Amount	Drawing nr.:	Material	Measurements	
			Units: mm	Drawn by:	
			Scale: -	Sheet: 1/1	
			Date: 26-06-2017	Revision: 1.0	
Projection: 		Format: A3	Title: Assembly instructions		