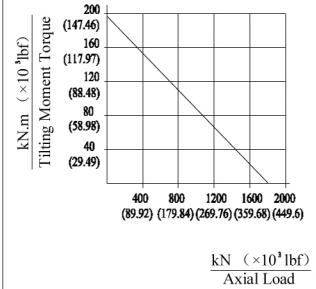
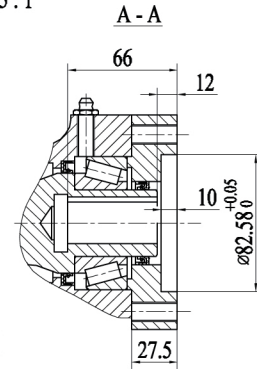
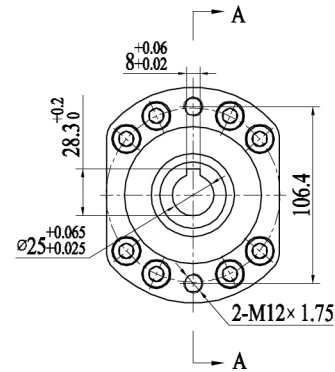


Worm Drive Performance Data		
Rated Output Speed	< 2.5 rpm	
Output Torque (Max.)	18.5 kN.m	13640 lbf.ft
Tilting Moment Torque (Max.)	196 kN.m	144.5×10 ³ lbf.ft
Holding Torque	80.1 kN.m	59.1×10 ³ lbf.ft
Axial Load (Max.)	1800 kN	404.64×10 ³ lbf
Radial Load (Max.)	675 kN	151.74×10 ³ lbf
Ratio of Worm Gear	94:1	
Backlash	≤ 0.1 °	

MOMENT LOAD CHART
Axial Load & Tilting Moment



Input
1.5 : 1



REV	DATE	REVISER	DESCRIPTION			
DESIGNED BY						
CHECKED BY						
APPROVED BY						
ALL PROPRIETARY RIGHTS IN THE SUBJECT MATTER HERE OF ARE RESERVED, AND NO PERMISSION IS GRANTED OR TO DISCLOSE REPRODUCE THIS PRINT IN WHOLE OR IN PART, ANY OF THE INFORMATION TO OTHERS.			WEIGHT	SCALE	Title	WORM DRIVE
			SIZE	A3	Model No.	
SYMBOLS ISO			SHEET	1 / 1	Part No.	WEA19B
					Rev	C