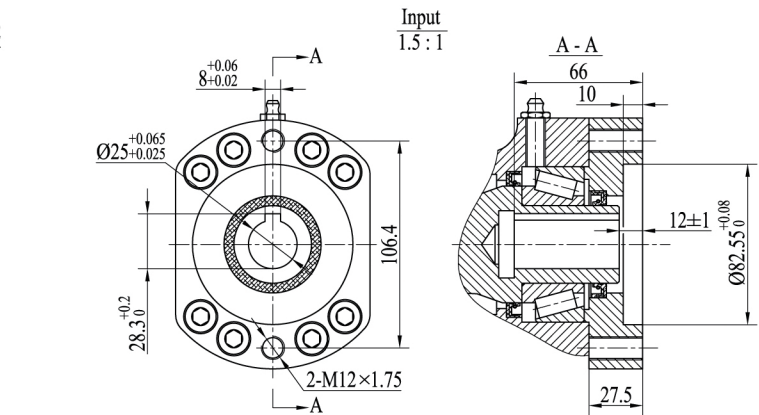
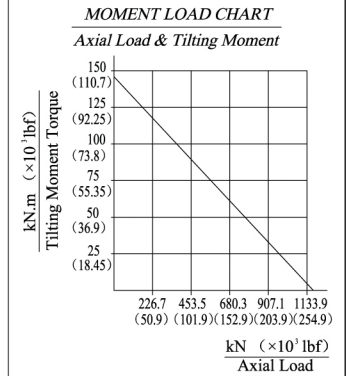


Worm Drive Performance Data		
Rated Output Speed	< 2.5 rpm	
Output Torque (Max.)	12.96 kN.m	9564 lbf.ft
Tilting Moment Torque (Max.)	142.4 kN.m	105.1 × 10 ³ lbf.ft
Holding Torque	72.3 kN.m	53.4 × 10 ³ lbf.ft
Axial Load (Max.)	1166 kN	262 × 10 ³ lbf
Radial Load (Max.)	435 kN	97.8 × 10 ³ lbf
Ratio of Worm Gear	104:1	
Backlash	≤ 0.1 °	



REV	DATE	REVISER	DESCRIPTION			
DESIGNED BY						
CHECKED BY						
APPROVED BY						
ALL PROPRIETARY RIGHTS IN THE SUBJECT MATTER HERE OF ARE RESERVED, AND NO PERMISSION IS GRANTED OR TO DISCLOSE REPRODUCE THIS PRINT IN WHOLE OR IN PART, ANY OF THE INFORMATION TO OTHERS.			WEIGHT	SCALE	Title	WORM DRIVE
			SIZE	1:4		
SYMBOLS ISO			SHEET	A3	Model No.	JLBE523-WEA17
			1 / 1			
						Rev
						D