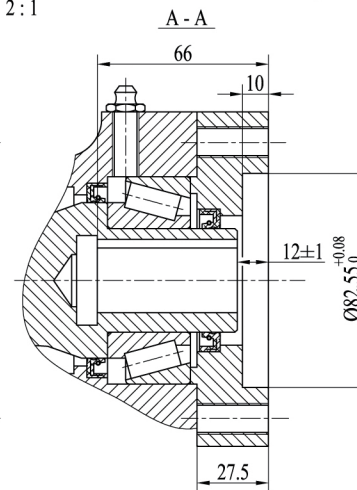


Input
2:1

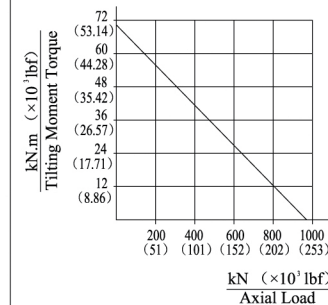


Worm Drive Performance Data

Rated Output Speed	<2.5 rpm	
Output Torque (Max.)	10.8 kN.m	7970 lbf.ft
Tilting Moment Torque (Max.)	71.2 kN.m	52.5×10^3 lbf.ft
Holding Torque	48 kN.m	35.4×10^3 lbf.ft
Axial Load (Max.)	960 kN	215.8×10^3 lbf
Radial Load (Max.)	360 kN	80.9×10^3 lbf
Ratio of Worm Gear	86:1	
Backlash	$\leq 0.13^\circ$	

MOMENT LOAD CHART

Axial Load & Tilting Moment



REV	DATE	REVISER	DESCRIPTION			
DESIGNED BY						
CHECKED BY						
APPROVED BY						
ALL PROPRIETARY RIGHTS IN THE SUBJECT MATTER HERE OF ARE RESERVED, AND NO PERMISSION IS GRANTED OR TO DISCLOSE REPRODUCE THIS PRINT IN WHOLE OR IN PART, ANY OF THE INFORMATION TO OTHERS.			WEIGHT	SCALE	Title	WORM DRIVE
			SIZE	1:4		
SYMBOLS ISO			SHEET	A3	Model No.	JLBE435-WEA14
			1 / 1			