

654321

D

C

B

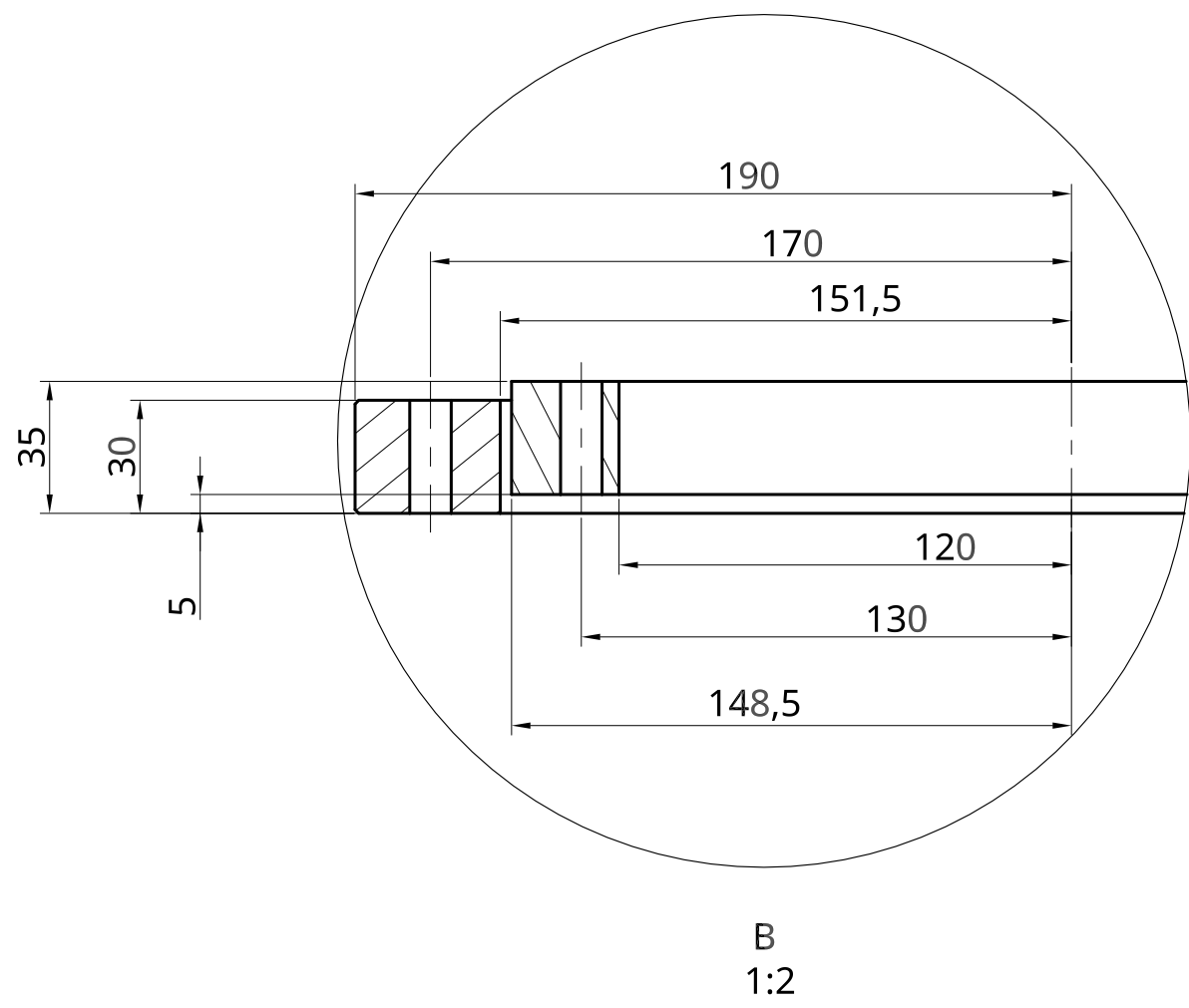
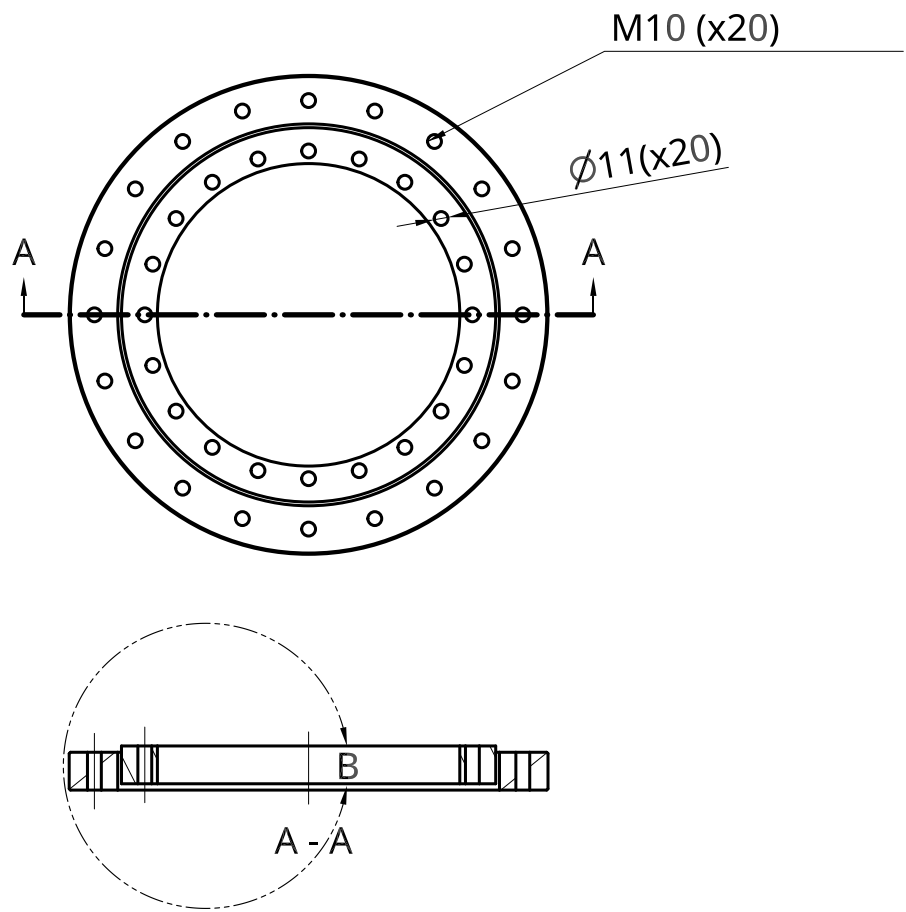
A

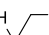

D

C

B

A



UNLESS OTHERWISE SPECIFIED, DIMENSIONS ARE IN MILLIMETERS ANGULAR = ± ° SURFACE FINISH 	<div><div>EUROnorm</div><div>DRIVE SYSTEMS</div></div>			
	DRAWN	Jip Lemmers	COMPANY Euronorm Drive Systems	DATE 2018-05-22
	TITLE JL10160300			
	DO NOT SCALE DRAWING	AMOUNT ----	MEASUREMENTS 173.5 x 531 x 15	
	BREAK ALL SHARP EDGES AND REMOVE BURRS	POSITION ---		
THIRD ANGLE PROJECTION 	MATERIAL C45N		FINISH	
SIZE A3		DWG NO. ----		REV. 1.0
SCALE 1:6		WEIGHT 14		SHEET 1 of 1