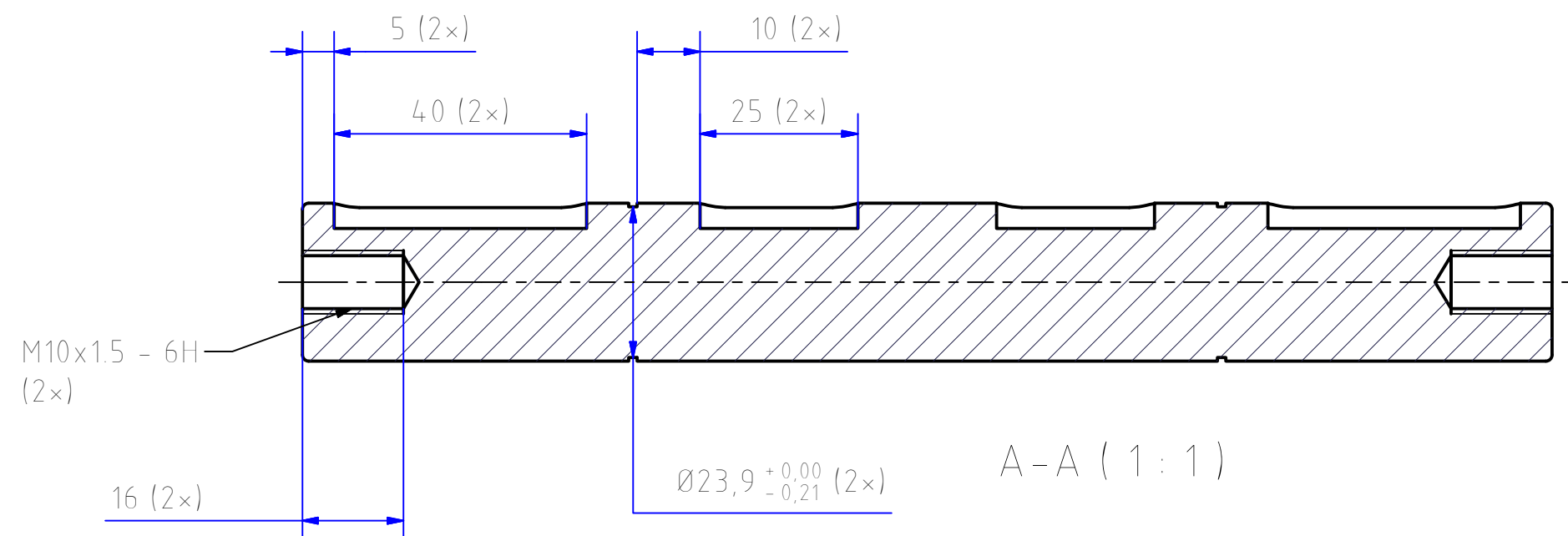
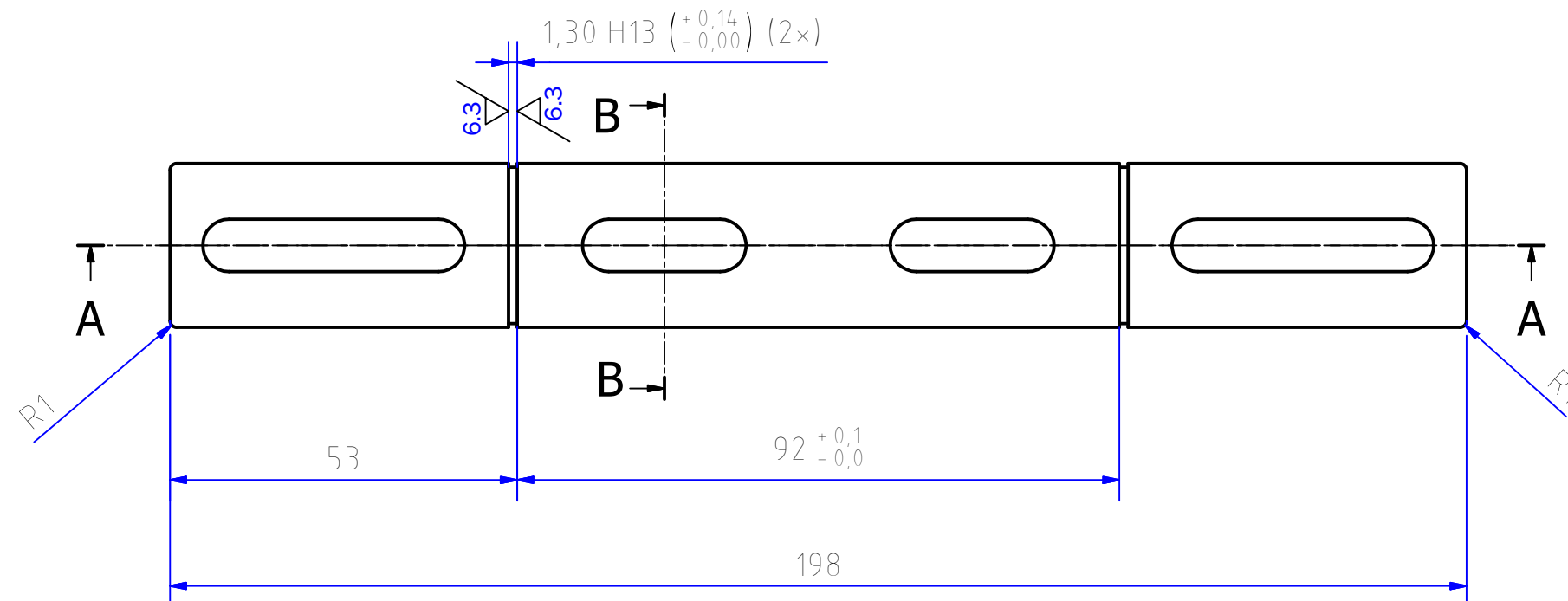
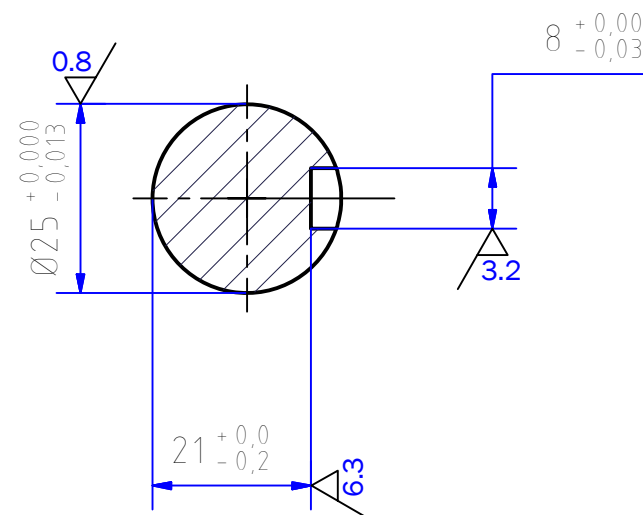
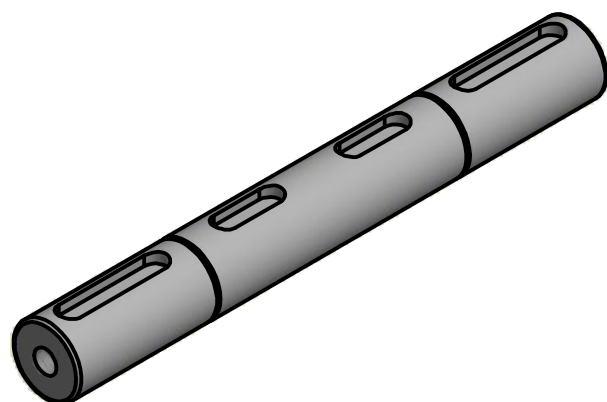


12,5 / (6.3 / , 3.2 / , 0.8 /)

B-B (1 : 1)



A-A (1 : 1)



1. Heat treatment: hardness 220~260 HB.
2. Chamfer 0.5x45°. Unless noted otherwise.

Pos.	Amount	Drawing nr.:	Material	Ø25 , L = 198	COPYRIGHT EURONORM, THIS DOCUMENT CONTAINS CONFIDENTIAL AND PROPRIETARY INFORMATION WHICH, UNLESS OTHERWISE EXPRESSLY AGREED TO IN WRITING BY EURONORM, REMAINS THE SOLE PROPERTY OF EURONORM, AND MAY NOT BE DISCLOSED, COPIED, REDISTRIBUTED, RETRANSMITTED, PUBLISHED OR USED TO CREATE DERIVATIVE WORKS. 2013 EURONORM.
			Units:	mm	
			Scale:	1:1	
			Date:	04-01-2016	
				Revision: 1.0	
EURONORM DRIVE SYSTEMS		Projection:	Format:	Title:	
			A3	Dubbele insteekas type 050	