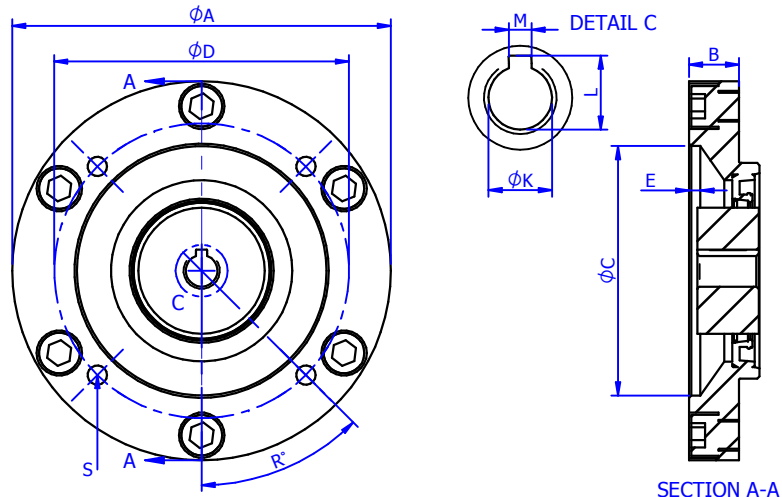


JRP02 Input

IEC B5 Flange

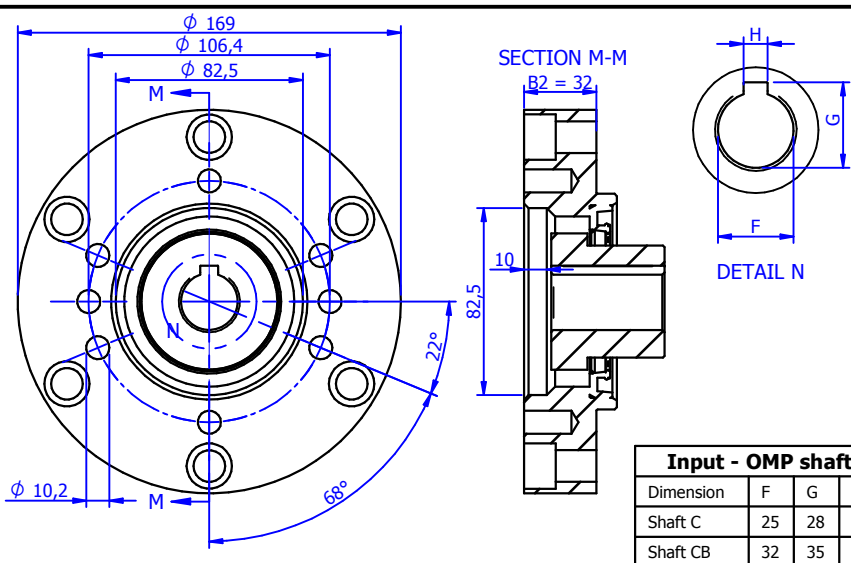


SECTION A-A

Input - IEC flange dimensions

Dimension	A	B	C	D	E	K	L	M	R	S
IEC 63	140	20	95G7	115	5	11H7	12,8	4Js9	45	M8
IEC 71	160	21	110G7	130	5	14H7	16,3	5Js9	45	M8
IEC 80	200	26	130G7	165	5	19H7	20,3	6Js9	45	M10
IEC 90	200	26	130G7	165	5	24H7	27,3	8Js9	45	M10
IEC 100	250	---	180G7	215	6	28H7	31,3	8Js9	45	M12
IEC 132	300	95	230G7	265	7	38H7	41,3	10Js9	45	M12

OMP flange



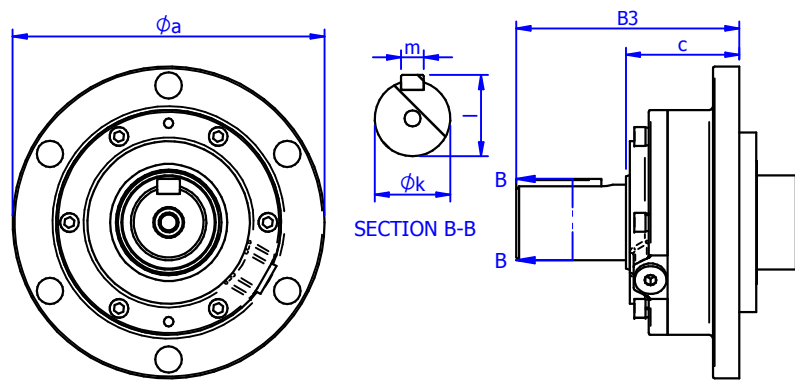
SECTION M-M

DETAIL N

Input - OMP shaft

Dimension	F	G	H
Shaft C	25	28	8
Shaft CB	32	35	10

Full shaft input



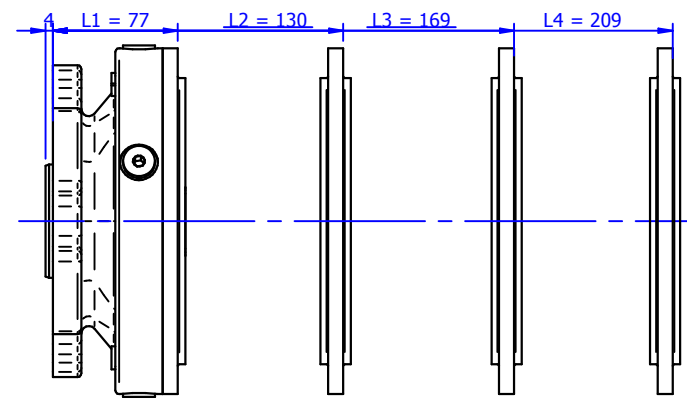
SECTION B-B

Input - Full shaft input dimensions

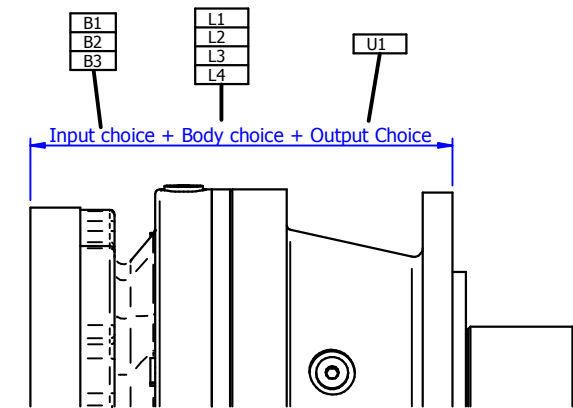
Dimension	a	B3	c	k	l	m
AD	165	118	60	40	43	12
ADM1	220	120	15	65	69	18
ADM2	272	144	39	65	69	18

JRP02 Body

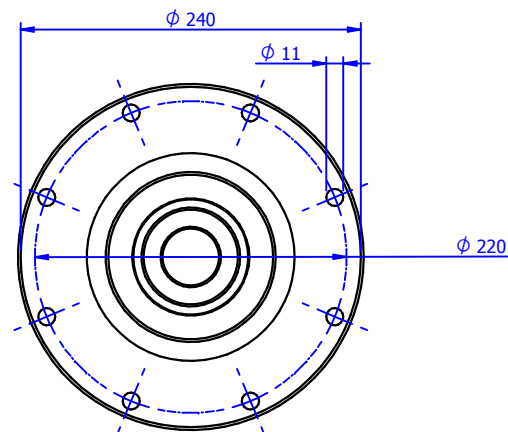
1 stage 2 stage 3 stage 4 stage



Complete JRP02

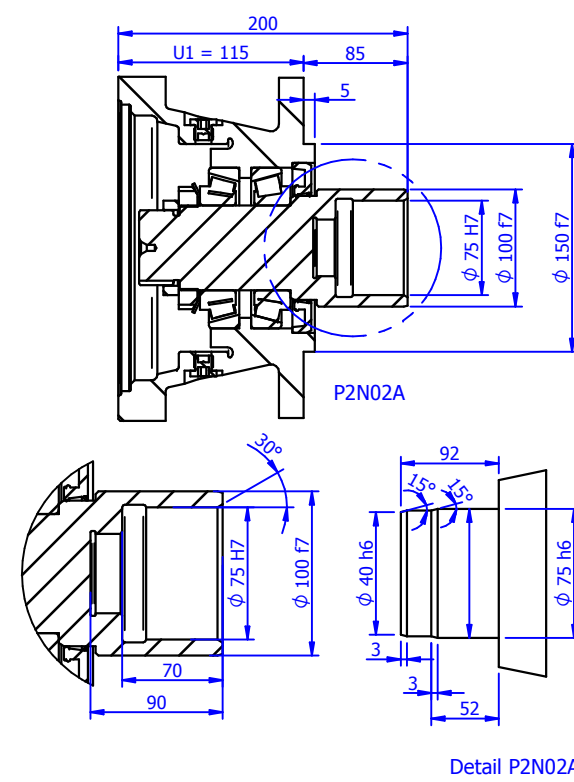


Output flange size



JRP02 Output

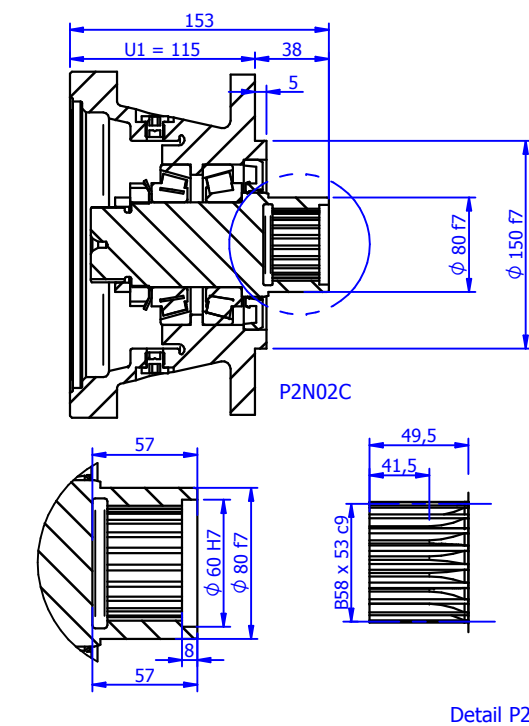
Hollow shaft with shrinkdisk



P2N02A

Detail P2N02A

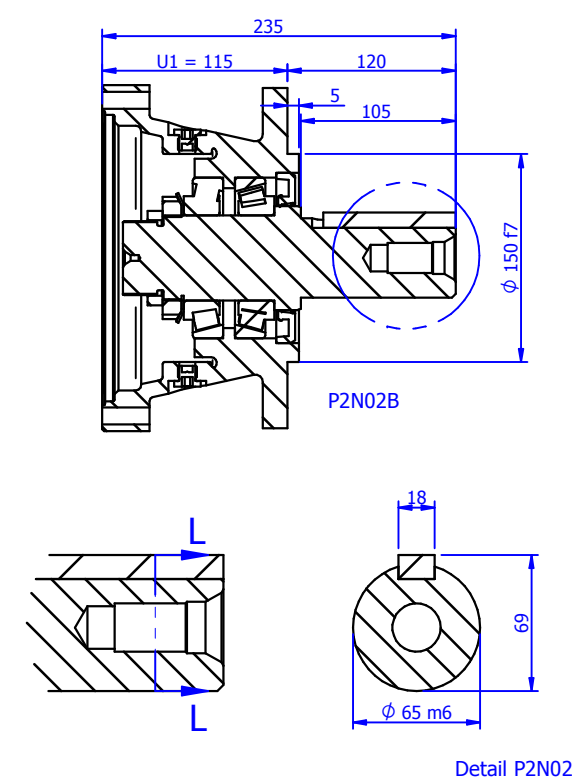
Hollow shaft with spline



P2N02C

Detail P2N02C

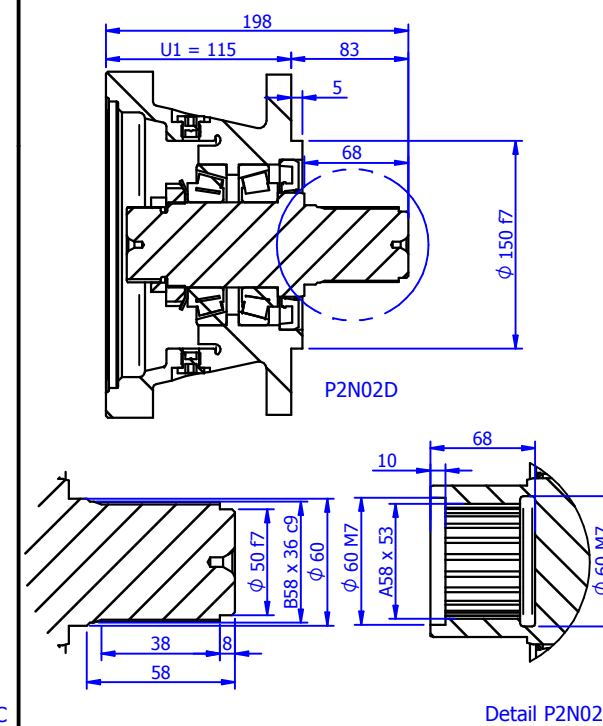
Full shaft with key



P2N02B

Detail P2N02B

Full shaft with spline



P2N02D

Detail P2N02D

QUANTITY:

01

DRAWING DESCRIPTION

JRP02



© EURONORM DRIVE SYSTEMS B.V., THIS DOCUMENT CONTAINS CONFIDENTIAL AND PROPRIETARY INFORMATION WHICH, UNLESS OTHERWISE EXPRESSLY AGREED TO IN WRITING BY EURONORM, REMAINS THE SOLE PROPERTY OF EURONORM, AND MAY NOT BE DISCLOSED, COPIED, REDISTRIBUTED, RETRANSMITTED, PUBLISHED OR USED TO CREATE DERIVATIVE WORKS.

PROJECTION:

THIRD PROJECTION

DRAWN BY:

Dmar

SCALE:

A3

SIZE:

A3

REVISION:

DATE DRAWN:

11-7-2019

ORDER NUMBER:

-

DRAWING NUMBER:

-

SHEET:

-